



PT NATHANIA MAHELTI SEJAHTERA

# COMPANY PROFILE



**Best Service,  
Right Time,  
Right People  
From the Heart.**

[www.NathaniaMaheltiSejahtera.com](http://www.NathaniaMaheltiSejahtera.com)



PT NATHANIA MAHELTI SEJAHTERA

# History



PT Nathania Mahelti Sejahtera also known as PT NMS is a service company with specialisation in machine and fabrication needs. Established in 2015 and located in Karawang, West Java.

Our objective is to provide services to our client especially factory with scope of works such as machining, fabrication, general service, construction areas, etc.

With expertise our team and our equipment we believe we can deliver your project with best service.

## Head Office:

Komp. Griya Kondang Asri Blok  
B1 No. 8 RT 15 / RW 07,  
Karawang Timur  
Jawa Barat - 41317

## Telp

0267 - 840 2505

## HP

0815 9855 284  
0813 1406 1397  
0812 1283 1454

## FAX

0267 - 8638156

## Email

Nathania\_sejahtera@yahoo.com  
info@nathaniamaheltisejahtera.com



PT NATHANIA MAHELTI SEJAHTERA

## Our Legal



PT Nathania Mahelti Sejahtera registered in  
NOTARIS & PPAT

Sisca Angelia Wulan Sari, SH, Mkn

Surat Izin Usaha Perdagangan (SIUP)

Nomor: 9120318070697

KBLI: 46591

Nomor Induk Berusaha (NIB)

Nomor: 9120318070697

Nomor Pokok Wajib Pajak (NPWP)

Nomor: 70.579.205.9-408.000

Kepesertaan BPJS Kesehatan

Nomor: 9120318070697

### Head Office:

Komp. Griya Kondang Asri Blok  
B1 No. 8 RT 15 / RW 07,  
Karawang Timur  
Jawa Barat - 41317

### Telp

0267 - 840 2505

### HP

0815 9855 284  
0813 1406 1397  
0812 1283 1454

### FAX

0267 – 8638156

### Email

Nathania\_sejahtera@yahoo.com  
info@NMSIndonesia.com





PT NATHANIA MAHELTI SEJAHTERA

## Our Vision



1. Being a national standard reference company in the field of manufacturing and machine repair
2. Having a high-tech and employees that capable of leading the market and develop the regional potential
3. Has the quality, culture and work ethic of the best

## Our Mission

1. Known as a company that seek the most complete manufacturing and machine repair as well as the high quality of fabrication
2. Grown and develop with the creative innovation
3. Trying to exceed the best customer satisfaction





PT NATHANIA MAHELTI SEJAHTERA

# Corporate Policy



## COMMITMENT

The management of PT Nathania Mahelti Sejahtera have commitment to achieve the best performance for the health, safety and environment (HSE) and continuous improvement.

## HEALTH AND SAFETY MANAGEMENT

PT Nathania Mahelti Sejahtera aims to create a workplace that is safe from major injuries for every employees and contractors.

## ENVIRONMENTAL MANAGEMENT

PT Nathania Mahelti Sejahtera aims to manage the environmental implicatons in effective way with a good standard of waste management in accordance with laws and regulations.

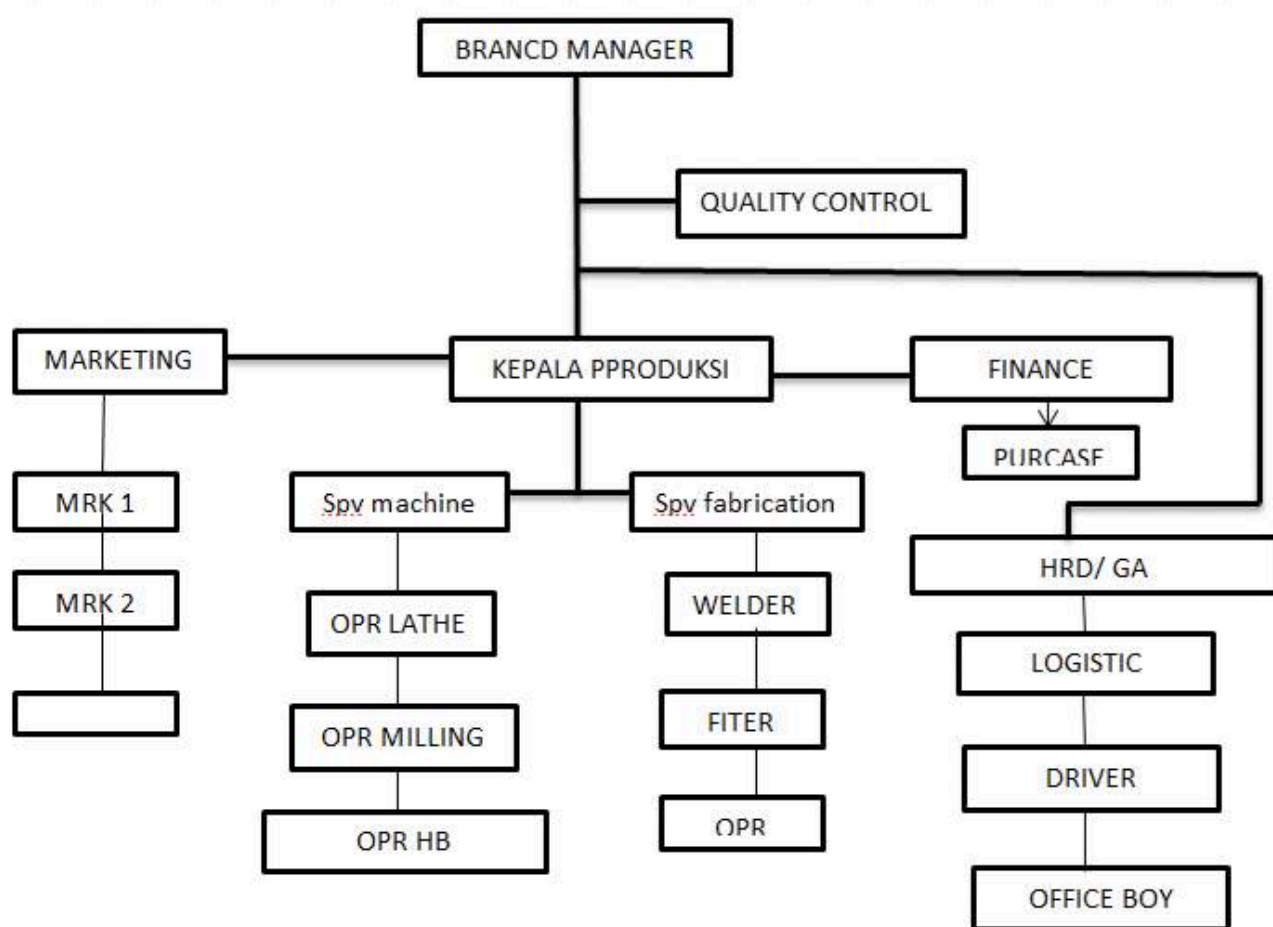
## RESPONSIBILITY & CONSULTATION

Each management representative has the responsibility to implement this policy in the area of its responsibilites through the annual performance review.



PT NATHANIA MAHELTI SEJAHTERA

# Structure Organization





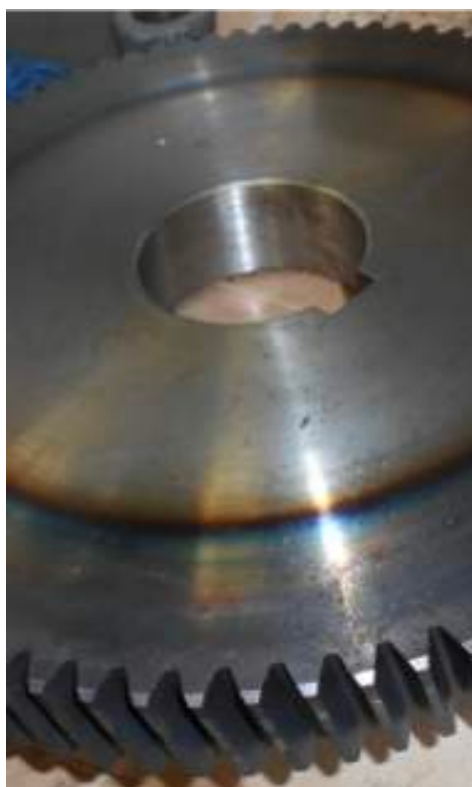


PT NATHANIA MAHELTI SEJAHTERA

# Main Business

## MACHINING

Fab shaft & axle | Fab gear & sprocket | Fab flange & pulley |  
Repair all for machining





PT NATHANIA MAHELTI SEJAHTERA

# Main Business

## MACHINING

Glass | PLTU | Batu Kapur | Alat berat  
Repair all for machining







PT NATHANIA MAHELTI SEJAHTERA

# Main Business

## FABRICATION

Line Strain | Hydraulic | Storage Tank | Drum Pulley |  
Banjo Cooler | Metal Bath | All Fabrication





PT NATHANIA MAHELTI SEJAHTERA

# Main Business

## FABRICATION

Line Strain | Hydraulic | Storage Tank | Drum Pulley |  
Banjo Cooler | Metal Bath | All Fabrication







PT NATHANIA MAHELTI SEJAHTERA

# Facilities

## Manual Lathe Machine Capacity

Dimension 460x3000 MM



## Manual Lathe Machine Capacity

Dimension 460x6000 MM





PT NATHANIA MAHELTI SEJAHTERA

# Facilities



## Milling Semi Digital Machine Capacity

1. General Machining
2. Make for key way
3. Machining for Radius

## Milling Semi Digital Machine Capacity

1. General Machining
2. Make for key way
3. Machining for Radius







PT NATHANIA MAHELTI SEJAHTERA

# Facilities

## Radial Drill Machine Capacity

General Drilling



## Slotting Machine Capacity

1. Use as slotting for key way
2. Use for Profile



## Plasma Cutting Capacity

1. Cutting max 100 mm
2. General cutting



## FCAW Welding Machine Capacity

All Welding for fcaw







PT NATHANIA MAHELTI SEJAHTERA

# Facilities

## Cutting Roll Machine Capacity

General Cutting







PT NATHANIA MAHELTI SEJAHTERA

# Facilities

**Measuring Instrument  
To Support The Quality of Work**







PT NATHANIA MAHELTI SEJAHTERA

# Facilities

**Over Head Crane Capacity 5 Ton**







**PT NATHANIA MAHELTI SEJAHTERA**

# Our Satisfaction Clients



AGC Group

**PT ASAHIMAS FLAT GLASS Tbk**



**PT Adhi Guna Putera**



**SIBELCO**

**PT Bhumidaya Indonesia**



**PT Pakubumi Semesta**



**PT. DUTA HITA JAYA**

**and many more...**



PT NATHANIA MAHELTI SEJAHTERA

## Contact Us



*Lets Talks*

**Head Office:**

Komp. Griya Kondang Asri  
Blok B1 No. 8 RT 15 / RW 07,  
Karawang Timur - Jawa Barat 41317

**Telp**

0267 - 840 2505

**HP**

0815 9855 284  
0813 1406 1397  
0812 1283 1454

**FAX**

0267 – 8638156

**Email**

Nathania\_sejahtera@yahoo.com  
info@nathaniamaheltisejahtera.com